



# Keyboard HF 2

## Funk & Soul Keys

Lick D "4th"



Two systems of musical notation for Lick D "4th". Each system consists of a grand staff (treble and bass clefs). The first system shows a melodic line in the treble clef with eighth and quarter notes, and a bass line in the bass clef with eighth notes. The second system continues the pattern, with the treble clef featuring more complex rhythmic patterns and the bass clef providing a steady eighth-note accompaniment.

Lick E "IV I with blue note"



Two systems of musical notation for Lick E "IV I with blue note". The notation includes fingerings (5, 3, 1, 2, 1, 1) and a blue note (F#) in the treble clef. The bass clef features a steady eighth-note accompaniment. The first system shows the initial part of the lick, and the second system shows the continuation with more complex chordal textures in the treble.

Lick F "I IV (inversions)"



Two systems of musical notation for Lick F "I IV (inversions)". The notation shows a sequence of chords in the treble clef, primarily using triads and dyads. The bass clef provides a steady eighth-note accompaniment. The first system shows the initial part of the lick, and the second system shows the continuation with more complex chordal textures in the treble.

# Keyboard HF 2

## Funk & Soul Keys

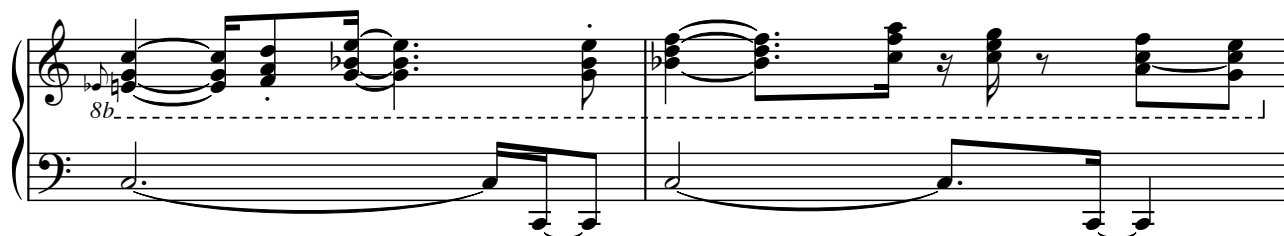
Lick G "JB-voicings"



Lick H "LivingCity-Lick"



Lick I "Dominant seven & Sus"



# Keyboard HF 2

## Funk & Soul Keys

Lick J "Mixed Styles"

The musical score for Lick J "Mixed Styles" is presented in two systems. The first system consists of two staves: a treble staff and a bass staff. The treble staff contains a sequence of chords and single notes, with fingerings indicated by numbers 1, 2, 3, 4, and 5. The bass staff contains a rhythmic pattern of eighth and sixteenth notes. The second system also consists of two staves. The treble staff continues the chordal sequence, and the bass staff continues the rhythmic pattern. The key signature is one flat (B-flat), and the time signature is 4/4.